



K-12 Hydration

Bottle Fillers, Pressure Coolers & Fountains



LEAD IN SCHOOL WATER IS POISONING CHILDREN

According to a study in the journal *Pediatrics*, **1.2 million kids in the U.S. suffer from lead poisoning.**

One in five of them—that's 240,000 kids—**got it from contaminated water.**

Where do kids spend most of their time, and drink most of their water? At school.

That lead isn't coming from the municipal water supply. It leeches in from aging pipes, like those in school buildings.

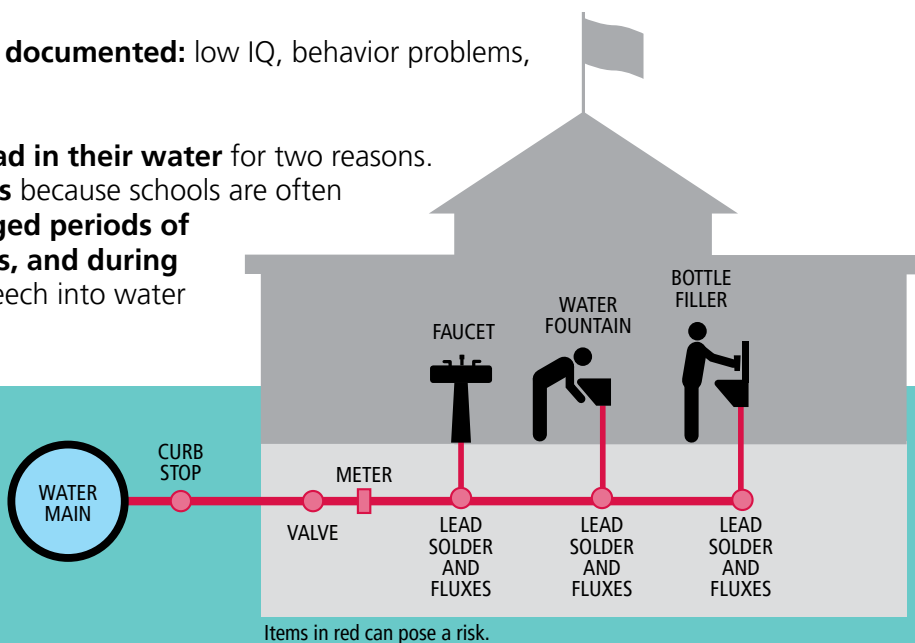
The ravages of lead poisoning are well documented: low IQ, behavior problems, slowed development.

Schools are especially susceptible to lead in their water for two reasons.

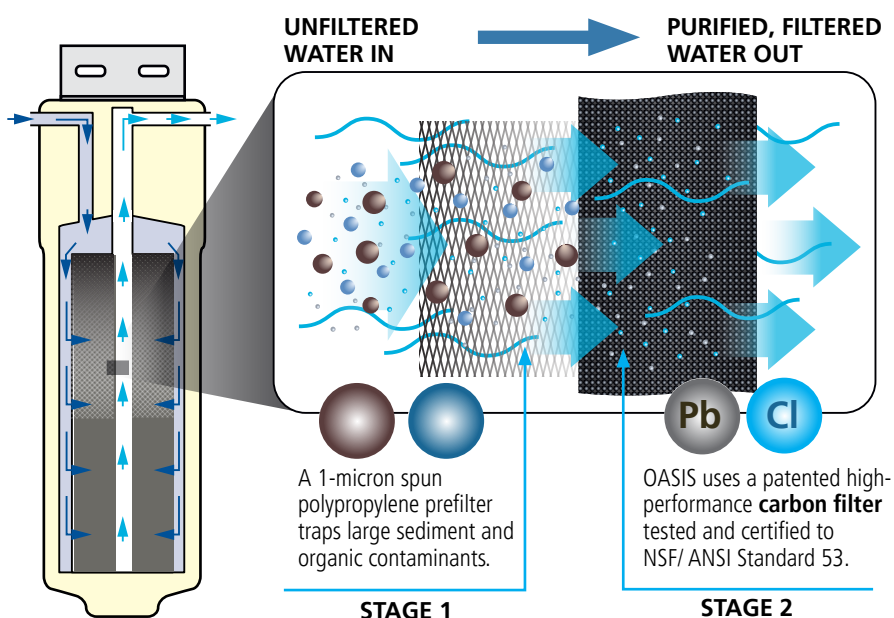
First, they have **longer water service lines** because schools are often situated far off roadways. Second, **prolonged periods of inactivity in the evenings, on weekends, and during summer months** give lead more time to leech into water standing in the pipes.

Potential lead sources in school drinking water

Many of us think that lead poisoning is a relic from the past, but until 2011 plumbing pipes were still allowed to contain 8 percent lead. Prior to 1986, no restrictions were in place.



OASIS Versafilter® filtration system



YOU CANNOT SEE, SMELL, OR TASTE LEAD. OASIS® IS YOUR PROTECTION.

Purification at the point of use is critical to preventing contamination. Here, OASIS is the leader. OASIS uses a patented high-performance carbon filter. The OASIS filtration process is tested and certified to NSF/ANSI Standard 53 for lead and cyst reduction, and tested and certified to NSF/ANSI Standard 42 for chlorine taste and odor reduction.



KIDS AND HYDRATION FACTS

2%

Children display noticeable impairment in cognitive function and motor skills when two percent or more of body weight is lost due to dehydration.

6 to 13 oz

Children aged 7 to 9 consistently performed better on tasks of visual attention and memory when drinking six to 13 ounces of water before a test.

Kids and Dehydration

Children are at greater risk of dehydration than adults due to their lower body weight, smaller reserve of body fluids, and higher surface-to-mass ratio.



ANTIMICROBIAL SURFACES: FIGHTING GERMS WHERE THEY LIVE

Constantly touched and infrequently cleaned, water fountains can be among the germiest places in school buildings.

Only OASIS deploys the continuous germ-fighting properties of antimicrobial copper for metal surfaces and, for molded-plastic components, we manufacture with our exclusive FRESHIELD® silver-infused resins.

Look for these icons throughout this brochure and read more on page 9.



TOTAL FACILITY ANALYSIS

We offer a holistic, 360-degree view that tells you precisely where and how water needs to be available.

Our experts look at your entire academic, foodservice, and athletic facilities. We make individualized recommendations based on usage, floor plan, traffic density, and more. The end result is a plan that makes the

most efficient use of available space and resources.

Whether in new, existing, or expanding campuses, OASIS® trained field representatives provide comprehensive drinking water system analysis for our qualifying customers.





Only OASIS® can offer a full suite of products for public areas such as drinking fountains, water coolers, bottle fillers, bottleless coolers, and under-counter coolers. Our solutions can be hard-piped in, free-standing, mounted on floors or walls, and placed in high-traffic areas or tucked away. Options include touch-free, antimicrobial, self-cleaning, and more.



BOTTLE FILLERS & FOUNTAINS

ELECTRONIC VERSAFILLER® BOTTLE FILLERS AND VERSACOOLER® II

BARRIER-FREE VERSACOOLER II/ELECTRONIC BOTTLE FILLER COMBO



Standard Features

- Fountain with integrated, hands-free bottle filler with programmable shut-off timer
- Integrated bottle counter and filter monitor
- Four antimicrobial copper push pads
- VersaFilter® for better-tasting water with reduced odor, cyst, lead, and chlorine content (on PGF8EBF STN and PGFEBF STN only)
- 100-micron strainer stops particles before they enter the waterway
- Waterways are lead-free in materials and construction
- Stainless steel top and frame
- High-efficiency cooling system and refrigerant R-134a
- Antimicrobial, flexible, one-piece water-saver bubbler; external stream-height adjustment

Look for this icon!

OASIS® has the only EPA-registered, antimicrobial copper touch points for its comprehensive line of water coolers and fountains.



Model	50° F Drinking Water/ 90° F Ambient Air Temp			Hot N' Cold Model	115 Volts, 60HZ			Auto-Off Water Flow	Cabinet Color Option*	Net Wt. Approx
	Rated Capacity GPH	Base Rate GPH	Pre-Cooler		Compr. HP	Full Load Amps	Rated Watts			
PG8EBF STN	8.0	8.0	No	No	1/4	4.6	460	Yes	Yes	79 lbs
PGEFBF STN	Fountain Only							Yes	Yes	59 lbs
PGF8EBF STN	8.0	8.0	No	No	1/4	4.6	460	Yes	Yes	80 lbs
PGFEBF STN	Fountain Only							Yes	Yes	60 lbs

*Also available with sandstone finish and copper top and nose.



BOTTLE FILLERS & FOUNTAINS



Look for this icon!

FRESHIELD® IS A SILVER-BASED ANTIMICROBIAL COMPOUND THAT PROTECTS THE SURFACES FROM DISCOLORATION, ODORS, AND DEGRADATION CAUSED BY THE GROWTH OF MICROORGANISMS AND MILDEW.

ELECTRONIC VERSAFILLER® BOTTLE FILLERS

RETROFIT – ADAPTS TO ALL EXISTING PG8AC/P8AM UNITS



Standard Features

- Adapter gasket allows the bottle filler to install onto today's most common water coolers
- Molded components are infused with FRESHIELD® to help fight degradation caused by the growth of bacteria
- Self-draining design does not require additional plumbing into the wall
- VersaFiller: Electronic sensor for touch-free activation
- Integrated back-lit bottle counter reminds you of the global impact of each refill
- Built-in LED monitor reminds you when filters need to be changed
- Programmable shut-off feature allows you to select how much water is used with each activation
- Waterways are lead-free in materials and construction
- Surface-mount frame assembly

Model	50° F Drinking Water/ 90° F Ambient Air Temp			Hot N' Cold Model	115 Volts, 60HZ			Auto-Off Water Flow	Cabinet Color Option	Net Wt. Approx
	Rated Capacity GPH	Base Rate GPH	Pre-Cooler		Compr. HP	Full Load Amps	Rated Watts			
PWEBF	0	0	No	No		.20	11	Yes		15 lbs

*Also available with mechanical activation (PWSBF).



INDEPENDENT SURFACE MOUNT, SPACE SAVER (NON-REFRIGERATED)



Standard Features

- Slim and space-saving design
- Molded components are infused with FRESHIELD® to help fight degradation caused by the growth of bacteria
- Built-in 100-micron strainer stops particles before they enter the waterway
- Waterways are lead-free in materials and construction
- Heavy-duty steel frame
- Hands-free bottle filler with 20-second shut-off, integrated counter and filter monitor
- Built-in drain – NO drip tray to empty
- Also available with optional R8 chiller

Model	50° F Drinking Water/ 90° F Ambient Air Temp			Hot N' Cold Model	115 Volts, 60HZ			Auto-Off Water Flow	Cabinet Color Option	Net Wt. Approx
	Rated Capacity GPH	Base Rate GPH	Pre-Cooler		Compr. HP	Full Load Amps	Rated Watts			
PWSMEBF	0	0	No	No		.20	11	Yes	No	15 lbs

*Also available with mechanical activation (PWSMSBF).

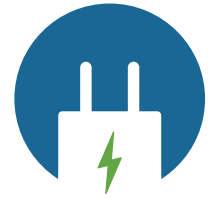


BOTTLE FILLERS & FOUNTAINS

MECHANICAL AQUA POINTE® SPORTS BOTTLE FILLER

Mechanical Activation

Hydration assured during power outages! All products on pages 6-7 feature mechanical activation. Only OASIS® has EVERY bottle filler configuration available as mechanical or electronic activation. Works without electricity!



MECHANICAL BOTTLE FILLER/RADII FOUNTAIN



Standard Features

- Molded components contain FRESHIELD®, which utilizes a silver-based antimicrobial that reduces the growth of microorganisms and mildew to protect the surfaces from discoloration, odors, and degradation
- Built-in 100-micron strainer stops particles before they enter the waterway
- Waterways are lead-free in materials and construction
- Flexible one-piece antimicrobial water-saver bubbler
- High-efficiency cooling system
- External stream-height adjustment on lower unit
- Mechanically activated push button
- Filtration system for taste, odor and chlorine reduction

Model	50° F Drinking Water/ 90° F Ambient Air Temp		115 Volts, 60HZ			Cabinet Color Option*	Net Wt. Approx
	Rated Capacity GPH	Base Rate GPH	Compr. HP	Full Load Amps	Rated Watts		
MGSBF	No Chiller					Yes	92 lbs
MG8SBF	8.0	8.0	1/4	4.9	500	Yes	150 lbs
MG12SBF	12.0	12.0	1/3	5.5	550	Yes	152 lbs

*Also available with electronic bottle filler.



MECHANICAL BOTTLE FILLER WITH FRAME ASSEMBLY



Standard Features

- Molded components are infused with FRESHIELD® to help fight degradation caused by the growth of bacteria
- Built-in 100-micron strainer stops particles before they enter the waterway
- Waterways are lead-free in materials and construction
- Heavy-duty steel frame
- High-efficiency cooling tank and coil
- Refrigerant R-134a
- Mechanically activated push button
- Filtration system for taste, odor and chlorine reduction

Model	50° F Drinking Water/ 90° F Ambient Air Temp		115 Volts, 60HZ			Cabinet Color Option*	Net Wt. Approx
	Rated Capacity GPH	Base Rate GPH	Compr. HP	Full Load Amps	Rated Watts		
MWGSBF	No Chiller					Yes	45 lbs
MWG8SBF	8.0	8.0	1/4	4.9	500	Yes	103 lbs
MWG12SBF	12.0	12.0	1/3	5.5	550	Yes	105 lbs

*Also available with electronic bottle filler.



BOTTLE FILLERS & FOUNTAINS

SURFACE MOUNT MECHANICAL BOTTLE FILLER WITH TRIM BEZEL



Standard Features

- Molded components are infused with FRESHIELD® to help fight degradation caused by the growth of bacteria
- Built-in 100-micron strainer stops particles before they enter the waterway
- Waterways are lead-free in materials and construction
- Heavy-duty steel frame
- High-efficiency cooling tank and coil
- Refrigerant R-134a
- Mechanically activated push button
- Filtration system for taste, odor and chlorine reduction

Model	50° F Drinking Water/ 90° F Ambient Air Temp		115 Volts, 60HZ			Cabinet Color Option*	Net Wt. Approx
	Rated Capacity GPH	Base Rate GPH	Compr. HP	Full Load Amps	Rated Watts		
MWSMGSBF	No Chiller					Yes	45 lbs
MWSMG8SBF	8.0	8.0	1/5	4.9	500	Yes	103 lbs
MWSMG12SBF	12.0	12.0	1/5	5.5	550	Yes	105 lbs

*Also available with electronic bottle filler.



Freshield



FOUNTAINS

There's an OASIS® Versacooler® II drinking fountain model to fit your specific needs, whether you desire refrigerated or non-refrigerated and/or filtered or non-filtered water. Every fountain basin is designed to eliminate splashing and standing water and features a water-saver bubbler to reduce waste water by 50%.

VERSACOOLER® II – ENERGY AND WATER CONSERVATION FOUNTAINS

BARRIER FREE, ADA, SINGLE & BI-LEVEL FOUNTAINS



Standard Features

- Four antimicrobial copper push pads
- Antimicrobial flex bubbler
- ADA-compliant for both adult and child when properly installed
- Built-in 100-micron strainer stops particles before they enter the waterway
- Waterways are lead-free in materials and construction
- Flexible one-piece water-saver bubbler
- Stainless steel top and heavy-duty galvanized steel frame
- High-efficiency cooling system
- External stream-height adjustment

Model	Filtration	50° F Drinking Water/ 90° F Ambient Air Temp				Hot N' Cold Model	115 Volts, 60HZ			Auto-Off Water Flow	Cabinet Color Option	Net Wt. Approx
		Rated Capacity GPH	Base Rate GPH	Pre-Cooler	Compr. HP		Full Load Amps	Rated Watts				
PG8AC	Sandstone, No Filter	8.0	8.0	No	No	1/4	4.6	460	Yes	Yes	64 lbs	
PGAC	Sandstone, No Filter	Fountain Only								Yes	Yes	34 lbs
PGF8AC	Sandstone, Filtered	8.0	8.0	No	No	1/4	4.6	460	Yes	Yes	65 lbs	
PGFAC	Sandstone, Filtered	Fountain Only								Yes	Yes	35 lbs
PG8AC STN	Stainless Steel, No Filter	8.0	8.0	No	No	1/4	4.6	460	Yes	Yes	64 lbs	
PGAC STN	Stainless Steel No Filter	Fountain Only								Yes	Yes	34 lbs
PGF8AC STN	Stainless Steel, Filtered	8.0	8.0	No	No	1/4	4.6	460	Yes	Yes	65 lbs	
PGFAC STN	Stainless Steel Filtered	Fountain Only								Yes	Yes	35 lbs

Universal Bi-Level – Modular installation. Can be installed left low and right high or left high and right low.

PG8ACSL	Sandstone, No Filter	8.0	8.0	No	No	1/4	4.6	460	Yes	Yes	94 lbs	
PGACSL	Sandstone, No Filter	Fountain Only								Yes	Yes	64 lbs
PGF8ACSL	Sandstone, Filtered	8.0	8.0	No	No	1/4	4.6	460	Yes	Yes	95 lbs	
PGFACSL	Sandstone, Filtered	Fountain Only								Yes	Yes	65 lbs
PG8ACSL STN	Stainless Steel, No Filter	8.0	8.0	No	No	1/4	4.6	460	Yes	Yes	94 lbs	
PGACSL STN	Stainless Steel No Filter	Fountain Only								Yes	Yes	64 lbs
PGF8ACSL STN	Stainless Steel Filtered	8.0	8.0	No	No	1/4	4.6	460	Yes	Yes	95 lbs	
PGFACSL STN	Stainless Steel Filtered	Fountain Only								Yes	Yes	65 lbs



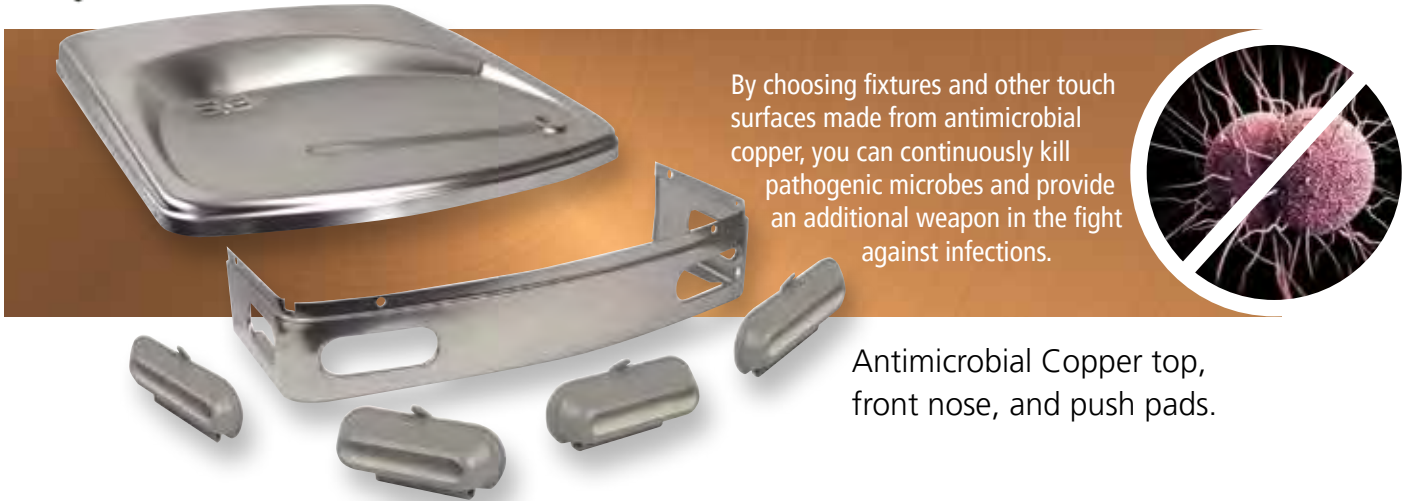
ANTIMICROBIAL PROTECTION TWO WAYS

- On metal surfaces, we offer optional antimicrobial copper components to fight germs, bacteria, and the spread of illness.
- For plastic components, FRESHIELD® protects the surfaces from discoloration, odors, and degradation caused by the growth of microorganisms and mildew.

Together, they form a germ-busting dynamic duo to help protect the health and wellness of users of our products.



ANTIMICROBIAL COPPER punches holes in the membrane of bacteria at the cellular level, effectively destroying them. The popularity of copper surfaces to replace traditional touch points in hospitals and other critical care industries is a testament to the natural anti-microbial effectiveness of copper!



We manufacture our plastic components with FRESHIELD®, our exclusive silver-based antimicrobial compound. Like copper, the antimicrobial ability of silver has been known for thousands of years. We simply harness nature to make yours a safer hydration experience.



FILTERS

BIODEGRADABLE GREEN FILTRATION SYSTEM

Improve the taste and quality of your drinking, cooking, and beverage-making water. OASIS® provides a superior green filter system that eliminates bad tastes, odors, and sediments, delivering great-tasting water without the hassle or price of other filtration systems.

Use everywhere you want great-tasting, filtered-fresh water: under-sink filtration, coffee machines, refrigerators, drinking fountains, point-of-use water coolers.

OASIS GALAXI FILTER

The Galaxi's unique filter design combines activated carbon with a cellulose-free synthetic fiber matrix. Superior to traditional active carbon filter elements, the Galaxi takes water filtration to the next level.

- Performs as a sediment filter and a carbon block in a single cartridge
- Dramatically improves chlorine taste and odor reduction
- Reduced blocking improves dirt-holding capacity
- Prevents carbon fines from being released into the water stream
- Reduces lead and cysts
- Contains bacteriostatic properties
- Available with phosphate to remove scale for hard water in hot water applications



Order #	Part
036930-001	Kit for PG8AC Series Quarter Turn EZ system
036930-002	Kit for Other Series Quarter Turn EZ system
036930-003	Kit for line filtration
037116-101	Galaxi filter replacement cartridge (for the above system)



OASIS VERSAFILTER® SYSTEM

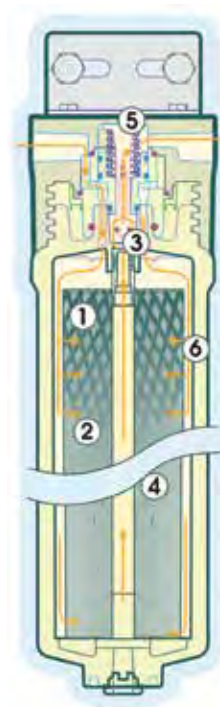
OASIS water coolers, when equipped with the VersaFilter System, provide a flexible water treatment solution that effectively reduces chlorine, odor, lead, and cysts. It improves the taste and appearance of drinking water as well as offering the highest performance in the most user-friendly package available.

OASIS VERSAFILTER

1. Spun polypropylene prefilter wrap extends the life of the filter by protecting the media from premature plugging due to sediment.
2. Unique formulation of powdered carbon plus patented lead-reduction media for high-performance filtration. Compression molded into a tight block for maximum contaminant and cyst reduction.
3. Triple O-ring seal ensures no bypass.
4. Radial flow-through filter design utilizes entire media area for maximum performance and minimal pressure drop.
5. Patented shut-off valve engages automatically as filter is inserted or removed.
6. Self-contained sealed cartridge ensures that hands do not touch filter media, reducing the potential for introducing bacteria.

The OASIS VersaFilter is easily accessible from inside the cooler for fast and easy filter changes. An automatic shut-off inside the filter eliminates the need to locate the water valve. Durable constructed, VersaFilter is designed to last 1,250 gallons or approximately six months.

- Reduces CHLORINE by 97% (ANSI/NSF 42)
- Reduces LEAD between 95.9% and 99% (ANSI/NSF 53)
- Reduces cryptosporidium and giardia CYSTS by 99.99% (ANSI/NSF 53)



Order #	Part
033926-001	Kit for P8AM and P8AC
033926-002	Kit for Other Series
033879-001	Filter Cartridge Only for Replacement



Tested and certified to NSF/ANSI Standard 53 for lead and cyst reduction.
Tested and certified to NSF/ANSI Standard 42 for chlorine taste and odor reduction.

POINT-OF-USE AND BOTTLE COOLERS

Whether you choose direct-plumbed point-of-use or convenient bottle coolers, OASIS® offers options to satisfy every budget and fill every need – as well as every bottle and cup size. Innovative features provide versatility, ease of use, and helpful technology. In modern designs or simple classics, every model is built for reliable daily use.

POINT-OF-USE AQUARIUS COUNTERTOP **NEW**

Space-saving and Stylish

- Hot, cold, and room temp from one dispense point
- Polymer cabinet won't rust or scratch countertop
- Night light
- Stainless steel cooling reservoir and hot tank
- Extra high 11" dispense height makes it easy to fill large sport bottles
- Commercial cooling capacity; compressor-driven refrigeration system
- Removable drip tray



Model #: **POU1ACTHSK**



AQUARIUS BOTTLE **NEW**

Modern and Easy to Use

- Hot, cold, and room temp from a single dispense point
- Polymer cabinet won't rust or scratch the floor
- Indicator lights for power, heating, and cooling
- Stainless steel cooling reservoir and hot tank
- Extra high 11" dispense height makes it easy to fill large sport bottles
- Commercial cooling capacity; compressor-driven refrigeration system
- Storage cabinet for extra bottle, cups, or other items
- Removable drip tray



Model #: **BAE1SHSK**



AQUARIUS BOTTOM LOAD BOTTLE **NEW**

Contemporary and Stylish

- Bottom load, no lifting heavy bottles
- Hot, cold, and room temp from one dispense point
- Polymer cabinet won't rust or scratch the floor
- Indicator lights for power, heating, cooling, and empty bottle
- Stainless steel cooling reservoir and hot tank
- Extra high 11" dispense height makes it easy to fill large sport bottles
- Commercial cooling capacity; compressor-driven refrigeration system
- Removable drip tray



Model #: **BAEB1SHSK**



ULTRA S BOTTLE

Sturdy with Modern Technology

- Pressure vessel direct-chill system combines with a specially designed CO2/water mixer for state-of-the-art chilling and carbonation performance
- Provides 22 x 6-oz. cups of CO2/cold water per hour (4 liters)
- Water carbonation level at 3.2-3.5 volumes, similar to leading bottled brands
- Can accommodate up to a 5-lb CO2 cylinder (not included)
- Features the WaterGuard® 7 with proprietary sealing mechanism; prevents floods caused by leaky bottles
- Electronic controls ensure easy start-up and consistent water flow
- Provides 45 x 6-oz. cups of hot water per hour



Model #: **BU1PVECHS**



WITH CARBONATED WATER

POINT-OF-USE MIRAGE

Versatility and Innovative Features

- Tri-temp: hot, room, and cold
- Stainless steel reservoir and hot tank
- Dual dispense option lets users plumb directly to a water line or use 3-5 gallon water bottles
- Indicator lights for heating and cooling
- Push-button dispensing and easy activation
- Handle on back enables easy transport and placement



Model #: **MIR311D-3**



POINT-OF-USE ARTESIAN

Reliable and Economical

- Available in hot n' cold
- Coated stainless steel panels resist fingerprints and smudges
- Stainless steel reservoir
- Handle on back enables easy transport and placement
- Dual mechanical float system with back-up safety operates even when the power is out
- Stainless steel hot tank




Model #: **PSWSA1SHS**



SUPPORT AFTER THE SALE

WE STAY WITH YOU WHEN THE INSTALLATION IS COMPLETE, OFFERING A ROBUST LIBRARY OF POST-INSTALLATION AWARENESS AND ADVOCACY MATERIALS.

Keeping students healthy and hydrated with clean, pure water is an ongoing commitment. We help remind students, staff, and parents about the importance of adequate hydration on developing minds and bodies; we remind how OASIS filtration protects kids from particles and contamination; and we promote the environmental positives of refillable water bottles. We make sure your district gets the most out of its investment.



DID YOU KNOW?

Children are most often exposed to lead at school at drinking fountains, tap water from faucets, or from food cooked with contaminated water. The EPA and CDC agree that there is no safe level of lead for children. Total protection is the goal.



BOTTLE SAVER ZONE
100231
BOTTLES USED

Bottle counter shows how many reusable water bottles were used.

Filter Status

Filter monitor indicates when it is time to change the filter.

FILL IT UP
Recycle
Reduce
Refresh



ALWAYS KNOW WHEN YOUR FILTER NEEDS CHANGING

Our “smart” water products can let everyone know when a water filter has reached the end of its service life. When everyone knows the status of the filter, filter-change protocols are more steadfastly adhered to.



MAINTENANCE



SCHOOL ADMIN

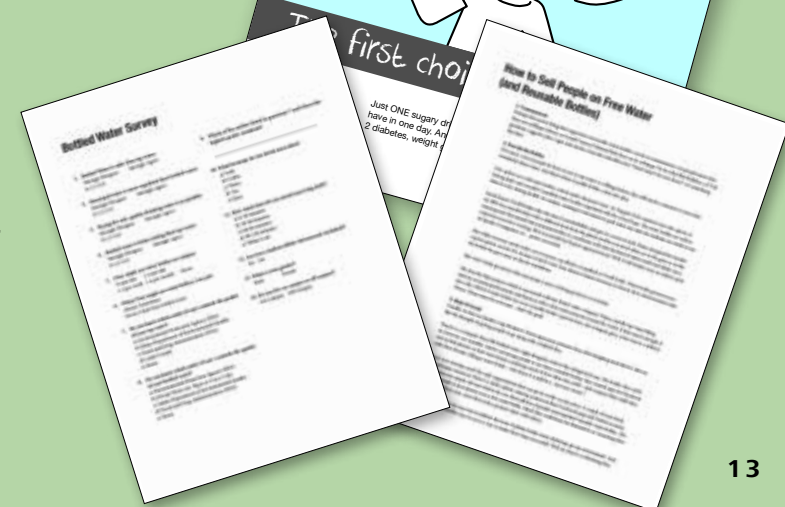


PTA



BUILD GOOD HABITS, KEEP STAKEHOLDERS INFORMED

- 💧 OASIS can support PTA fundraising efforts, providing support as well as advocacy materials.
- 💧 We can work with school systems to explore available grants.
- 💧 Finally, we can supply you with branded display items to raise awareness about water purity, encouraging students to choose water over sugary drinks.



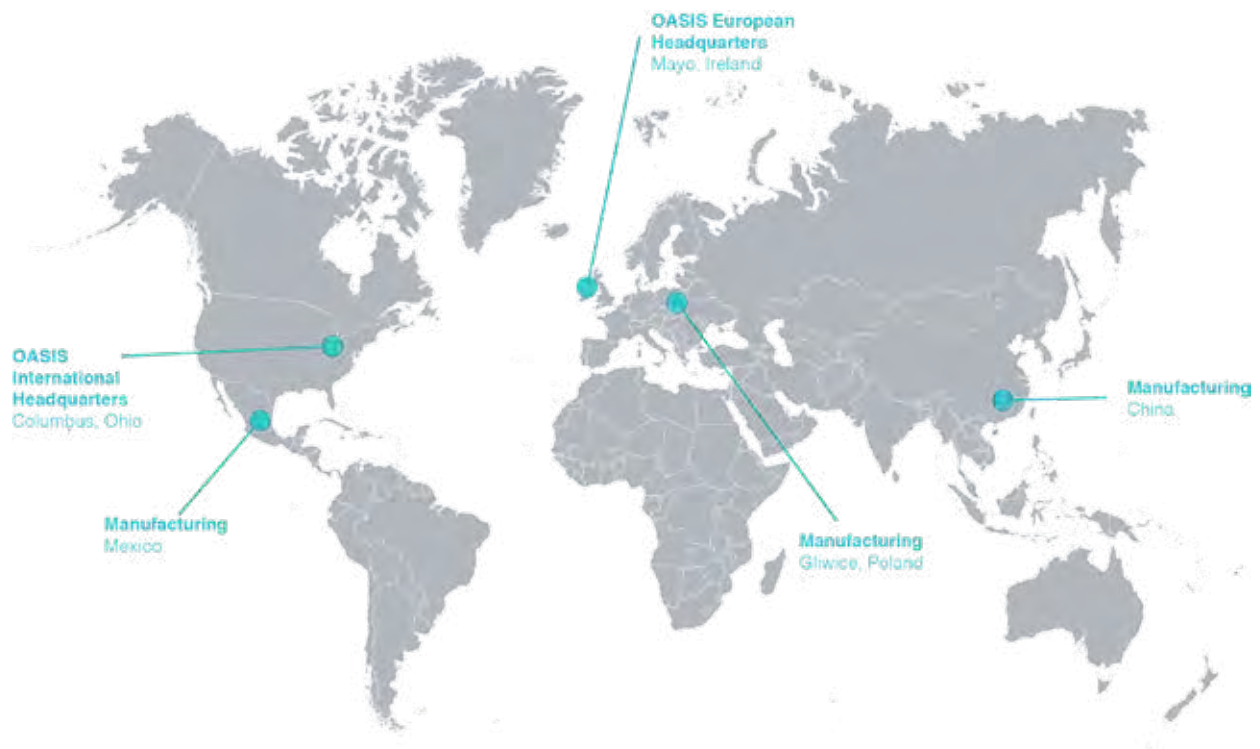
OASIS INTERNATIONAL

222 East Campus View Blvd.
Columbus, OH 43235

www.oasiscoolers.com

1-800-646-2747

info@oasiscoolers.com



Since 1910, OASIS International has focused on bringing refreshing water to the world. Since inventing the modern-day drinking fountain, the company has become the global leader in the design, manufacture, and distribution of clean drinking water systems. The company's offering includes bottle fillers, water coolers, bottleless coolers, under-counter coolers, dehumidifiers, and countless environmentally friendly products.

With an ongoing commitment to green thinking, OASIS sets out to change the world, one sip at a time.